



# *Alma Cloud Resiliency and High Availability*

Dvir Hoffman

Director, Marketing & Product Management



# Alma Cloud Reliability



No single point of failure



Fault tolerant



Seamless and automatic updates



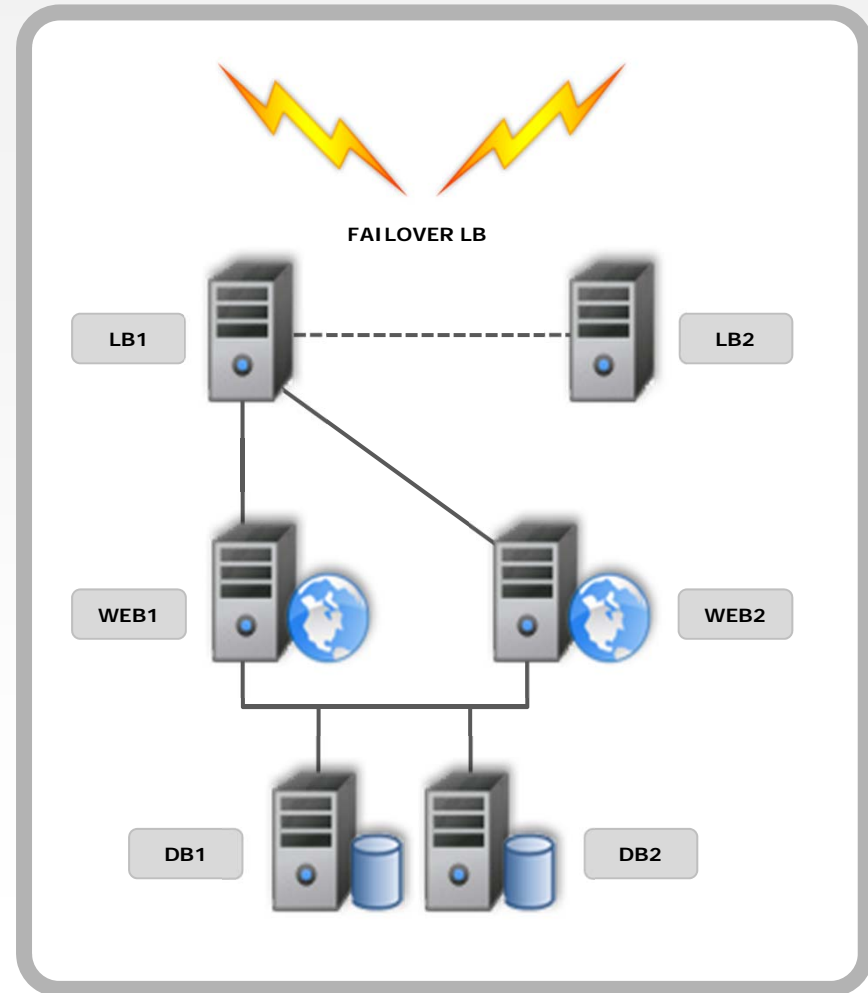
Monitoring the entire environment



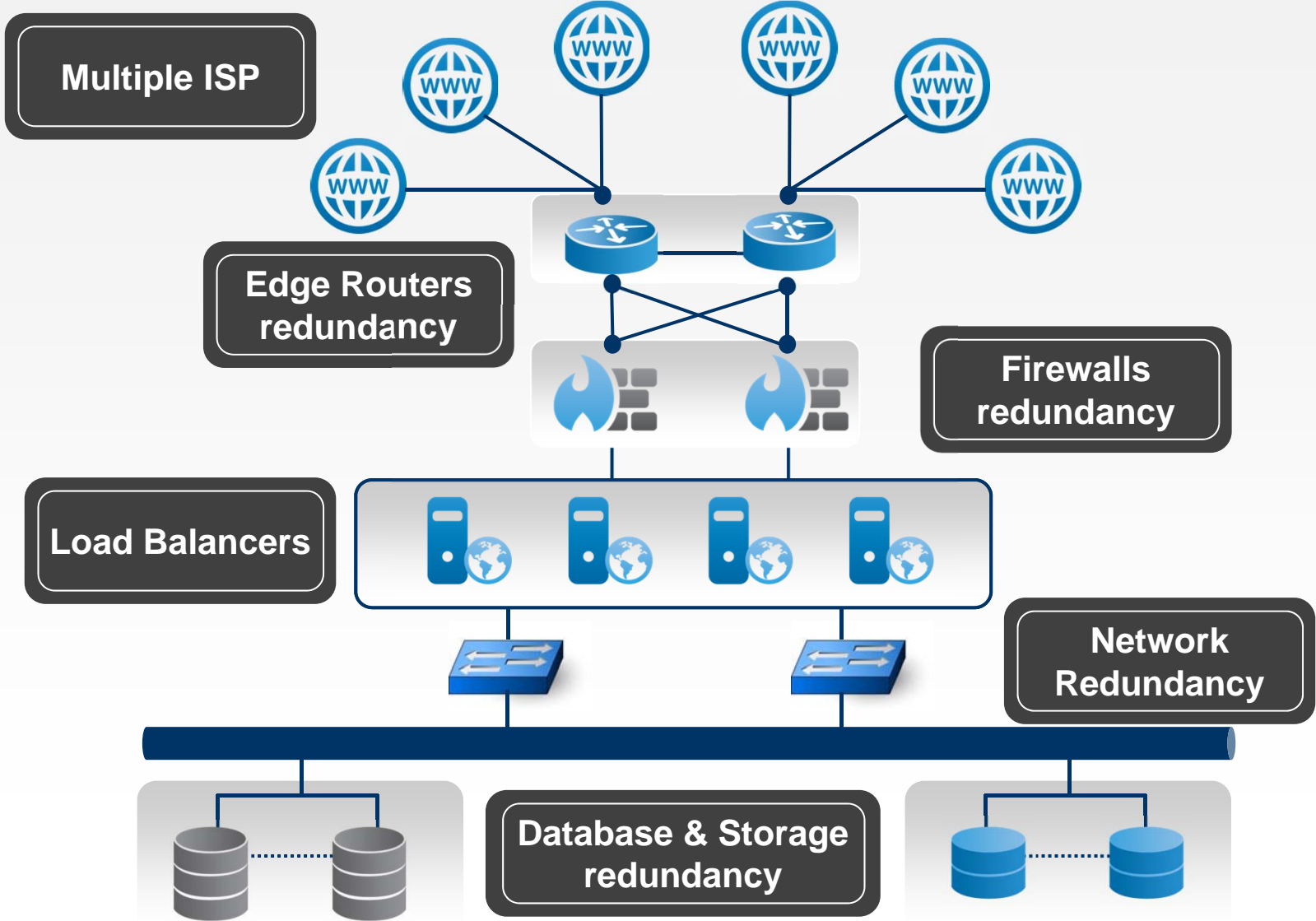
Tracking Bottlenecks

# No Single Point of Failure

- **Full Redundancy**
  - Multi levels data redundancy
  - No single point of failure
- **Instant Failover**
  - No interruption in service
  - Instant and transparent failover
- **Load Balanced**
  - Eliminating server stability issues
  - Requests are handled by multiple servers
  - Increases performance
  - Protects from sudden traffic spikes



# Fault Tolerant, Fully Redundant



# Ex Libris Cloud Backup and Recovery

- Several storage snapshots per day
- Full backup is available on a daily base
- Replication to a secured remote storage facility
- Recovery data is consistent at remote and local facility
- Data for recovery available at any time locally and remotely

# Proactive Performance Monitoring

### Alma NA

Troubleshoot Analyze Configure Actions ▼

<b>Policy Violations</b> No Policy Violations in the time range	<b>Load</b> <b>7.3k</b> calls <b>484</b> calls / min	<b>Response Time</b> <b>670</b> ms	<b>Errors</b> <b>1.2 %</b> of 7.3k calls <b>88</b> errors <b>6</b> errors / min
--	---	---------------------------------------	--

<b>Business Transaction Health</b>  0 critical, 0 warning, 121 normal	<b>Server Health</b>  0 critical, 0 warning, 5 normal
---	---

---

### Alma EU

Troubleshoot Analyze Configure Actions ▼

<b>Policy Violations</b> No Policy Violations in the time range	<b>Load</b> <b>4.0k</b> calls <b>265</b> calls / min	<b>Response Time</b> <b>408</b> ms	<b>Errors</b> <b>2.3 %</b> of 4.0k calls <b>93</b> errors <b>6</b> errors / min
--	---	---------------------------------------	--

<b>Business Transaction Health</b>  0 critical, 0 warning, 117 normal	<b>Server Health</b>  0 critical, 0 warning, 6 normal
---	---

---

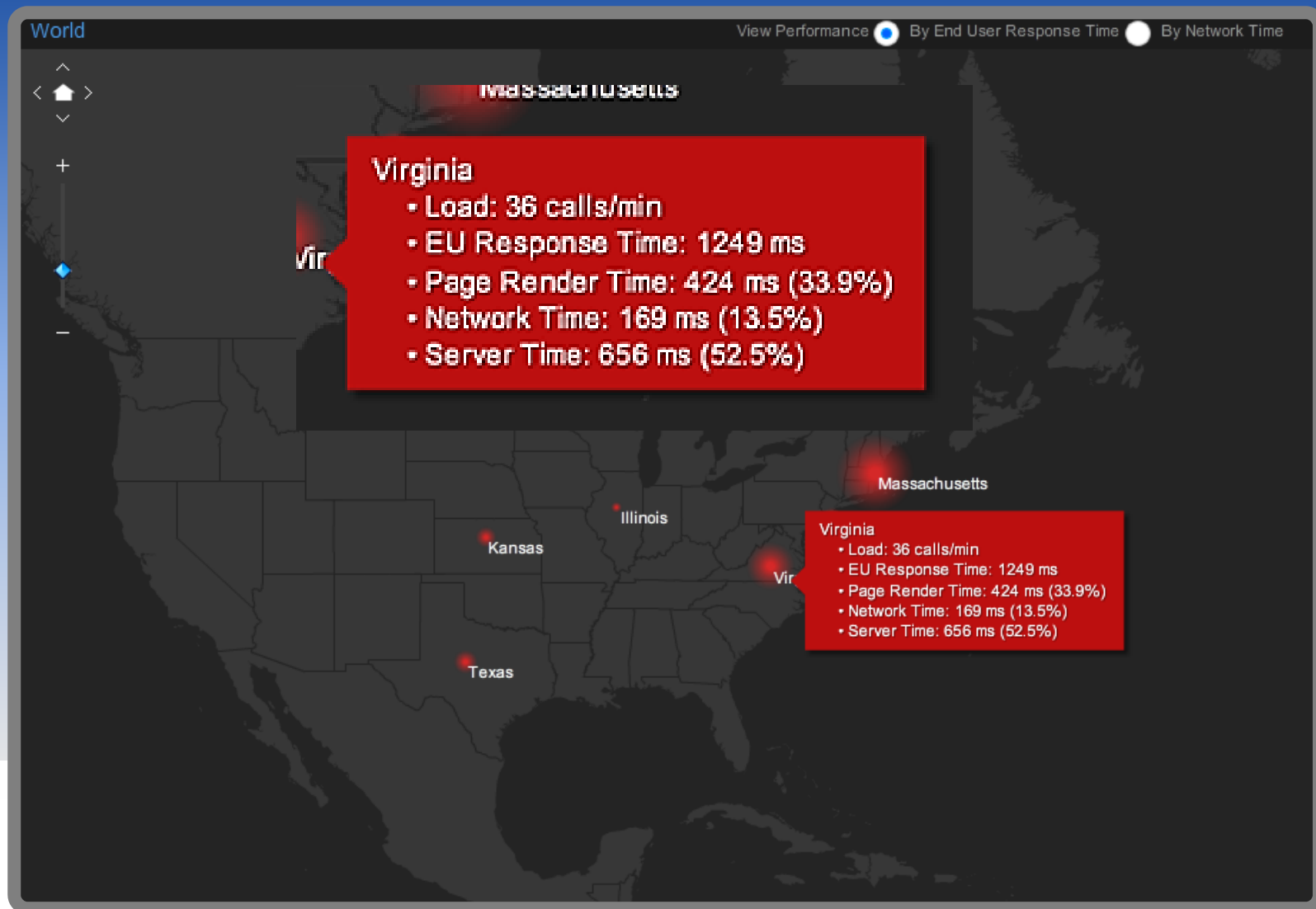
### Alma QA

Troubleshoot Analyze Configure Actions ▼

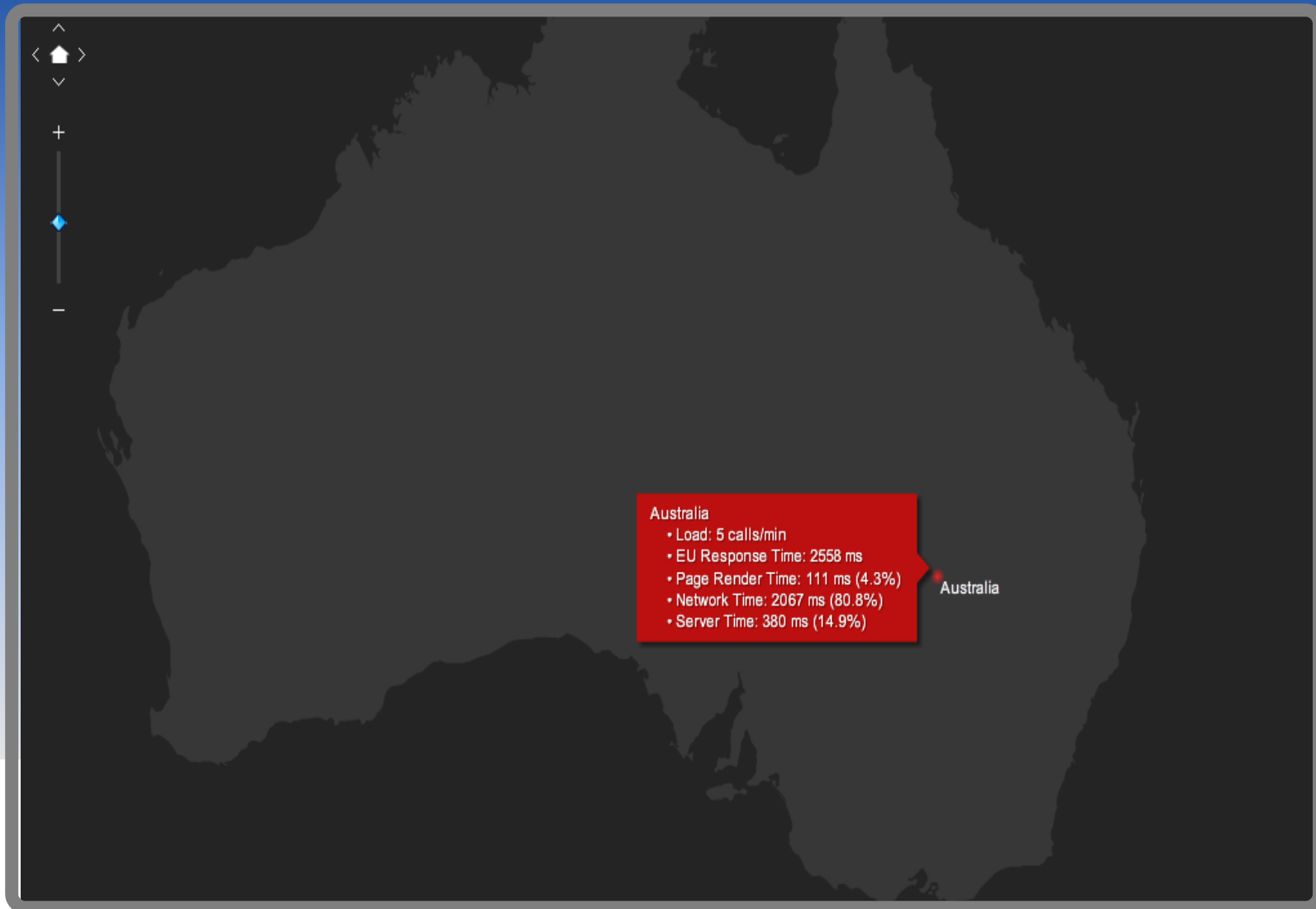
<b>Policy Violations</b> No Policy Violations in the time range	<b>Load</b> <b>0</b> calls <b>0</b> calls / min	<b>Response Time</b> <b>0</b> ms	<b>Errors</b> <b>0 %</b> of 0 calls <b>0</b> errors <b>0</b> errors / min
--	--	-------------------------------------	--

<b>Business Transaction Health</b>  0 critical, 0 warning, 117 normal	<b>Server Health</b>  0 critical, 0 warning, 6 normal
---	---

# Monitoring End User Experience



# Monitoring End User Experience



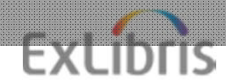


# Monitoring Business Transaction

Alma NA Business Transactions

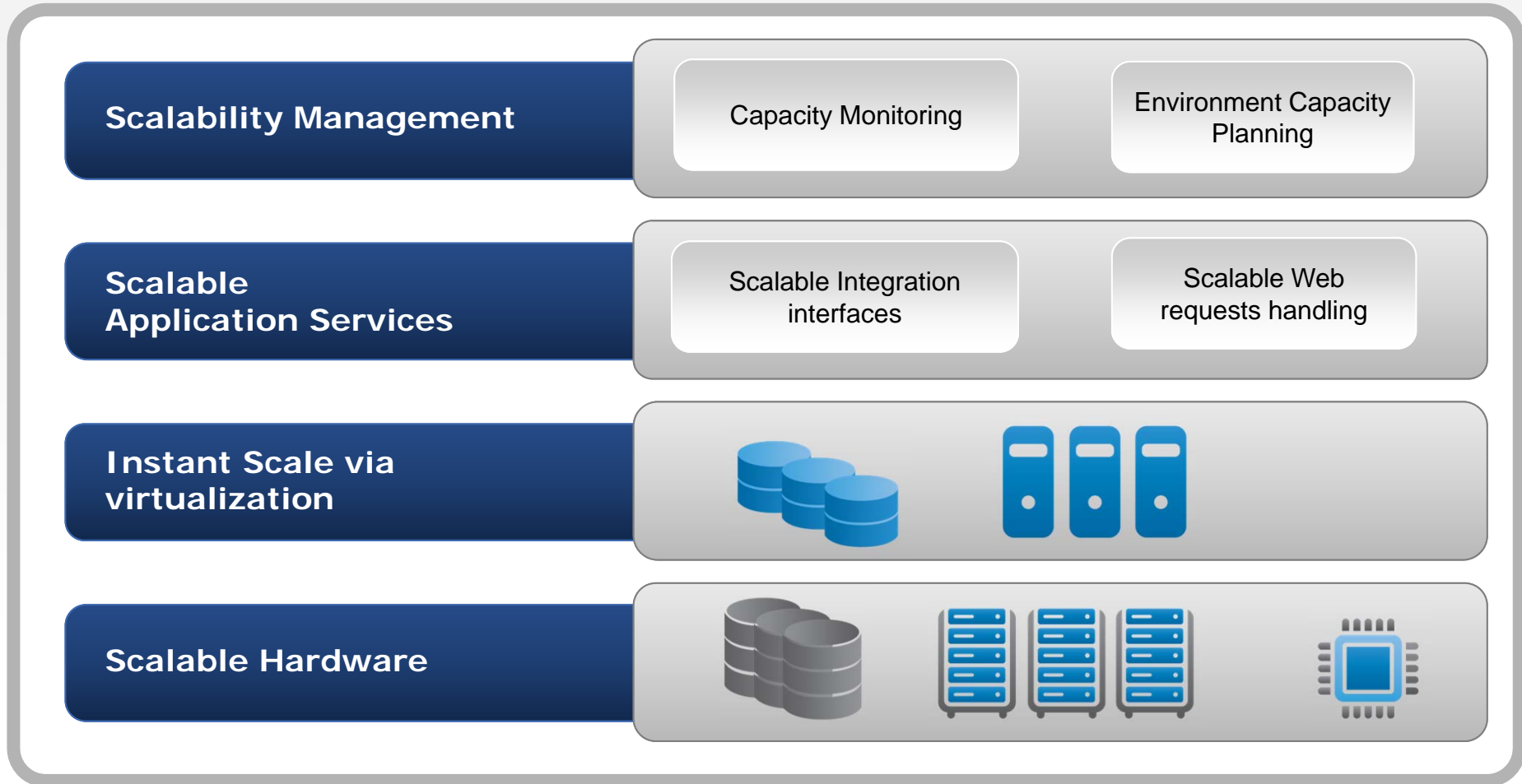
View Dashboard More Actions View Options

Name	Health	End User Time (ms)	Page Render Time (ms)	Network Time (ms)	Server Time (ms)	Calls	Calls / min
RTA	✓	0	0	0	662	218	15
PG-loan.fulfillment_checkout.xml	✓	609	200	178	362	212	14
PG-search.mms_results.xml	✓	930	338	233	528	200	13
URResolver-External.viewit	✓	0	0	0	435	167	11
PG-mms.marc_record_simple_view.xml	✓	2012	1367	216	631	151	10
Z39	✓	0	0	0	229	137	9
URResolver-External.CTO	✓	0	0	0	695	124	8
PG-po.poline_receiving_list.xml	✓	1351	348	147	918	117	8
PG-loan.fulfillment_patron_workspace_loan.x	✓	1435	188	179	1132	116	8
PG-resource_editor.physical.items_list.xml	✓	849	226	125	475	115	8
URResolver-External.getit	✓	0	0	0	404	98	7
PG-loan.fulfillment_discharge_item.xml	✓	1099	189	205	735	90	6
PG-resource_editor.physical.item_general.xr	✓	1097	246	162	724	85	6
PG-po.create_new_serial_item.xml	✓	1444	422	123	809	77	5
PG-po.poline_summary.xml	✓	803	136	126	464	72	5
mdeditor open	✓	809	366	98	461	71	5
PG-user_management	✓	493	66	122	319	65	4
PG-resource_editor.physical.holdings_list.xr	✓	688	378	106	287	65	4
PG-search.physical_ie_results.xml	✓	734	456	114	729	51	3
WS-CourseWebServices	✓	0	0	0	1560	40	3
PG-po.poline_receiving_items_list.xml	✓	2109	301	150	1685	36	2
PG-invoice.invoice_wizard_lines_tab.xml	✓	1135	96	198	604	32	2
URResolver-External.single_service	✓	0	0	0	1066	30	2





# Multi-Tiered Scalability





**Thank You!**